

## CHATEAU DE FLAUGERGUES GARDENS park / garden / forest / nature reserve

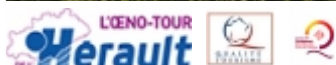
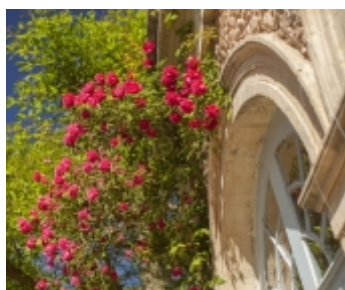
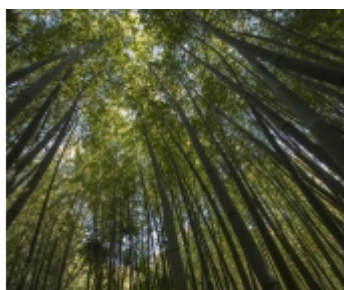
Tél : +33 (0)4 99 52 66 37 - Fax : +33 (0)4 99 52 66 44

1744, avenue Albert Einstein - 34000 MONTPELLIER

Email : [visiter@flaugergues.com](mailto:visiter@flaugergues.com)

Site internet : <https://www.flaugergues.com/>

Flaugergues is the most ancient of Montpellier's folies - a family house since 1696 with furniture of Louis XV origin, 17th century Flemish tapestries and a collection of a fine quality earthenware and porcelain. The French-style gardens lead toward an English-style park with an orangery are classified 'Remarkable Gardens'.



**Location :** On the outskirts, Montpellier - Petite Camargue

**Languages spoken :** English - German

### Prices

**Groupes :** min. 15 pers.  
max. 200 pers.

### Prices 2022 :

- Guided visit (group price) : adults from 10 €

### Facilities / services

#### Facilities :

- Car park
- Coach parking

#### Services :

'Backstage of the cellar' (1:30 hour) : Guided visit of the classified park, the gardens, the City Oasis and the permaculture farm of Flaugergues + tasting of 3 wines with 'fougasse'.

- From 15 people: 15€ / person
- Group package from 1 to 15 people: 225€
- Every day by prior reservation

'A sweet Folie in Flaugergues' (4 hours): Guided visit of the castle including the gardens and tasting of 3 wines with 'fougasse' + Lunch at the 'Folia' restaurant:

- From 15 people: 45€ / person
- Every day except when the restaurant is closed

Booking request: please send an e-mail at [visiter@flaugergues.com](mailto:visiter@flaugergues.com)

#### Activities / products

average length of time : **1:30 hour**

#### Activities :

The 'gardens' around the Chateau are arranged in 5 different areas :

- The terrace in front of the castle which offers a classic, simple, bare aspect, leaving the business of decor to the architecture and sculptures.
- The terrace flowerbed is highly symbolic of the castle as a whole. During the 18th century it served as a model around which numerous other flowerbeds of the region were based. The current owners, by planting 10.000 box-trees, have committed themselves to this new 'French' flowerbed.
- The long alleyway known as the Olive Tree Alley, which skirts the west of the Chateau, makes for a fine sight of 400m of box-trees and young olive trees. At the Southern most point of this alley there is a viewpoint giving a spectacular view of the Chateau, as well as of the sea, ponds and the surrounding countryside.
- The Park is situated to the south-west of the castle. It consists of an 'English Garden', a botanical garden created in 1850 with 3 different ideas in mind - floral decoration, exoticism and priority given to the great trees that stretch out over 3 hectares.
- The Vines, which were situated all around the Flaugergues in the past, are now to be found mostly to the east of the castle.

#### Products :

- Production and sales of AOP wines and "vin de pays" red, rosé and white, of which some medalist wines. 28 hectares of vineyards.